

# G1024D

24-Port Gigabit Ethernet Unmanaged Switch



# G1024D

## 24-Port Gigabit Ethernet Unmanaged Switch

---

### Descriptions

G1024D is a 24-port gigabit Ethernet unmanaged switch independently designed by IP-COM. The switch supports wire-speed forwarding of all ports to ensure smooth transmission of large files and video streaming. It features a compact metal body, and supports desktop, wall and rack mounting. As a flexible and simple-to-use device, it can be connected to such network devices as computers and network cameras. It is your ideal choice for video surveillance and wired networking in such scenarios as SMBs, communities, factories, and schools.

## Key Feature

- Compliant with IEEE802.3, IEEE802.3u, IEEE802.3ab, IEEE802.3x
- 24 10/100/1000 Base-T Ethernet ports
- 8K MAC address and MAC address automatic learning
- IEEE 802.3x full-duplex flow control and half-duplex backpressure flow control
- Plug and play
- 48 Gbps non-blocking wire-speed forwarding backplane bandwidth
- 4 Mb large buffer design
- With 13-inch body design, and support desktop, wall and rack mounting

## Main Features



### Small & Compact Design

The body is small and compact, and the width is only half of the ordinary 13-inch device.



### Easy to Install

Support multiple mounting methods, such as desktop, wall and rack.



### Plug and play

Plug and play for easy networking.



### Wire Speed Forwarding

The switch features wire speed forwarding of all ports.

# Specifications

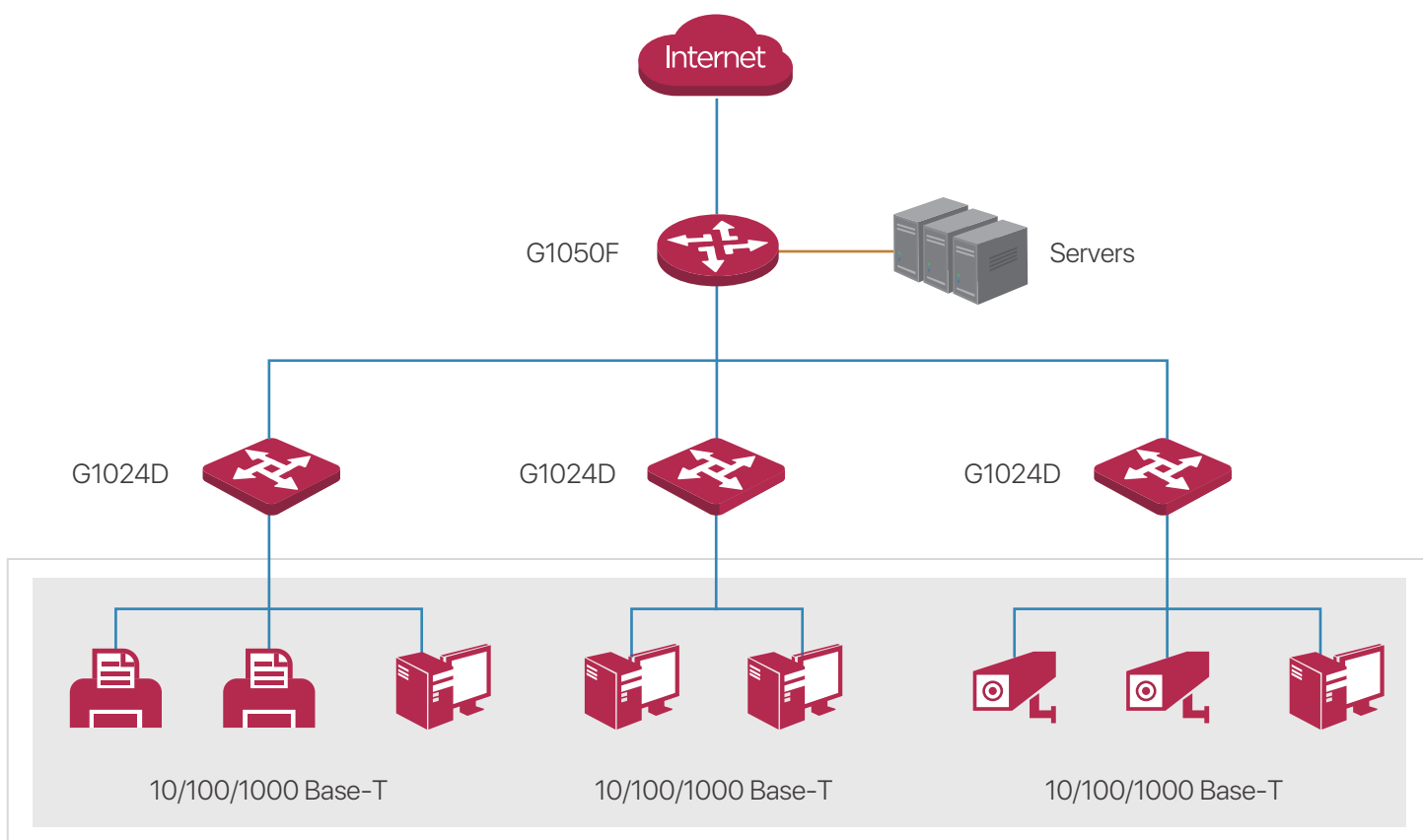
Model	G1024D
<b>Hardware Specifications</b>	
Network Standards	IEEE802.3, IEEE802.3u, IEEE802.3ab, IEEE802.3x
MTBF	50,000 hours
LED Indicators	One Link/Act LED indicator for each port One Power LED indicator for each device
Ports	24* 10/100/1000 Base-T Ethernet ports
Lightning Protection	≥6KV
Switching Mode	Store-and-forward
Switching Capacity	48Gbps
Forwarding Rate	35.7Mpps
MAC Address Table	8K
Buffer	4 Mb
Input Voltage	AC: 100–240V 50/60Hz
Dimensions (L × W × H)	294 mm x 120 mm x 44 mm
Power Consumption	<12W
Environment	Operating temperature: 0°C – 45°C Storage temperature: –40°C – 70°C Operating humidity: (10% – 90%)RH, non-condensing Storage humidity: (5% – 90%)RH, non-condensing

## Software Specifications

Jumbo Frame	15K
Certificates	FCC、CE、RoHS

## Relevant Info

- Cable
- Optical fiber





**IP-COM NETWORKS CO.,LTD.**

Tower E3, No.1001, Zhongshanyuan Road,  
Nanshan District, Shenzhen, China. 518052  
Service: [info@ip-com.com.cn](mailto:info@ip-com.com.cn)  
Inquiry: [marketing@ip-com.com.cn](mailto:marketing@ip-com.com.cn)  
Tel: +86-755-27653089