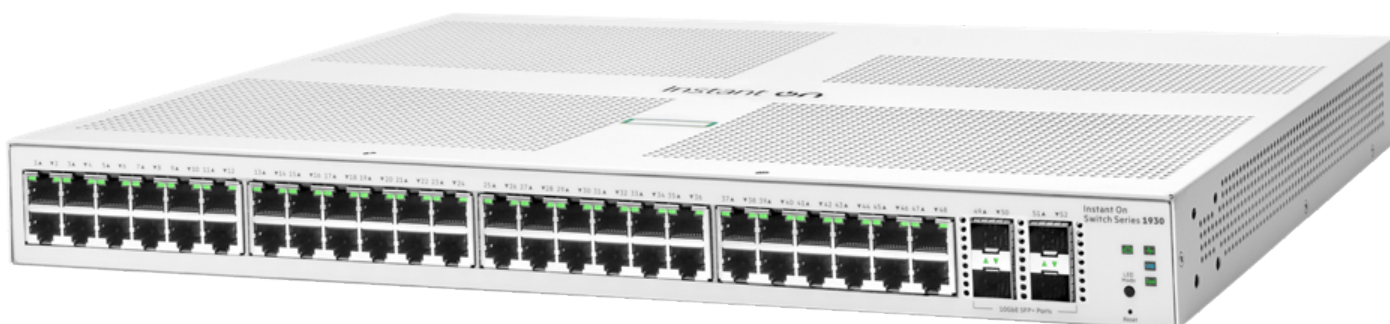


# HPE Networking Instant On Switch 1930

HPE Networking Instant On Switch 48p Gigabit 4p SFP+ 1930 (JL685A)



## What's new

- Seven advanced smart managed Layer 2+ Gigabit switches for high-performance connectivity.
- Non-PoE and Class 4 PoE (i.e. PoE+) 8-, 24- and 48-port models for deployment flexibility.
- 1 G/10 G SFP+ ports on 24- and 48-port models for fiber connectivity.
- HPE Networking Instant On mobile app and/or cloud-based web portal for easy network management onsite or remotely.
- Option to manage your switches through local web GUI.

## Overview

The HPE Networking Instant On Switch 1930 series is designed for small and growing businesses that require enhanced performance to support bandwidth-demanding applications. The 1930 switch series seamlessly integrates with existing Instant On indoor/outdoor access points and can be centrally managed with the Instant On mobile app onsite or remotely.

These cloud-managed layer 2+ Ethernet switches consist of 8-, 24-, and 48-port Class 4 PoE (i.e. PoE+) and non-PoE Gigabit Ethernet models, with 1 G SFP slots on 8-port model and 1 G/10 G SFP+ slots on 24-/48 G models for fiber connectivity.

## Features

### Simplify Network Deployment and Management for Small Organizations

The HPE Networking Instant On Switch 1930 series features easy-to-use, out-of-the-box, plug-and-play deployment.

The series offers a complete portfolio of choices for increased small business

flexibility. It consists of seven models including 8 G-, 24 G-, and 48 G-ports with and without class 4 PoE (i.e. PoE+).

The 24- and 48- port models include four SFP/SFP+ transceiver slots that support Gigabit or 10-Gigabit speeds for fiber connectivity.

The HPE Networking Instant On Switch 1930 series can be deployed using two management modes – Instant On cloud-management (access via mobile app and/or web portal) and the local web GUI.

### **Keep Your Business Protected with Integrated Security Features**

The HPE Networking Instant On Switch 1930 series supports energy efficient Ethernet for lower power consumption and an enhanced feature set for more robust operation.

Enhanced security features such as IEEE 802.1x, and VLANs guard your network from unwanted or unauthorized access.

Automatic denial-of-service (DOS) monitors and protects the network against malicious attacks.

Management security restricts access to critical configuration commands, offers multiple privilege levels with password protection.

### **Deliver High Performance**

The HPE Networking Instant On Switch 1930 series delivers advanced functionalities including customizable like VLANs, link aggregation, Spanning Tree Protocols, and IEEE 802.1X access control.

8-, 24-, and 48-port configurations with a choice of non-PoE and Class 4 PoE models provides deployment flexibility that fits all small business environment. Class4 PoE options allow to power devices like IP phones, surveillance cameras and access points, without the cost of additional cabling.

The 24- and 48-port models include 1 G/10 G SFP+ ports for reliable fiber connectivity and other connections across longer distances.



Technical specifications

HPE Networking Instant On Switch 48p Gigabit 4p SFP+ 1930

|                       |  |
|-----------------------|--|
| Product Number        | JL685A   |
| Differentiator        | Ports: 48 Gigabit copper<br>Uplink ports: 4 SFP+ 1/10 GbE ports  |
| Ports                 | 48 RJ-45 autosensing 10/100/1000 ports (IEEE 802.3 Type 10 BASE-T, IEEE 802.3u Type 100 BASE-TX, IEEE 802.3ab Type 1000 BASE-T);<br><br>Duplex: 10 BASE-T/100 BASE-TX: half or full; 1000 BASE-T: full only<br>4 SFP+ 1/10 GbE ports |
| Memory and processor  | ARM Cortex-A9 @ 800 MHz<br>512 MB SDRAM, 256 MB flash<br>1.5 MB packet buffer  |
| Throughput            | 130.95 Mpps, maximum   |
| Switching capacity    | 176 Gbps   |
| Management features   | Instant On Portal, Web browser, SNMP Manager   |
| Input voltage         | 100 - 127 / 200 - 240 VAC  |
| Operating temperature | 32°F to 104°F (0°C to 40°C)  |
| Power consumption     | 36.9W maximum, 16.8W idle  |
| Product dimensions    | 4.39 x 44.25 x 28.24 cm  |
| Weight                | 3.13 kg  |



For additional technical information, available models and options, please reference the [QuickSpecs](#)

## HPE Aruba Networking Services

HPE Aruba Networking services simplify and accelerate the network technology lifecycle, enabling your network to scale with better predictability and cost-effectiveness. Whether you operate your own network and need to improve your IT efficiencies, or you want to offload some of the burden, we have the services you need to reach your goals.

Learn more about what HPE Services - Aruba Networking has to offer at: <https://www.hpe.com/edge/services>

### Support Services

Our support portfolio provides the essential support elements as well as proactive and preventive features to help you improve your team's productivity and get the most from your network. Our support customers benefit from faster issue resolution, simplified operations and efficiencies, and reduced network issues.

### Professional Services

With deep intellectual capital and purpose-built tools, our team delivers a range of standard and custom professional services designed to accelerate your value from HPE Aruba Networking technology.

#### Project based services include:      Annual subscription services include:

- Planning, audit, and assessment
- Architecture review and design
- Deployment, migration, and knowledge transfer
- Network optimization
- Intelligent Operations
- Customer Experience Management

Our [Education Services](#) allow your team to come up to speed quickly.

### HPE GreenLake for Networking

Our NaaS solution, is part of the HPE GreenLake services family, and simplifies network operations, accelerates equipment handling, and increases the value of your HPE Aruba Networking solution. If you need expert guidance and automation-based operations for your team, please explore our NaaS approach through HPE GreenLake for Networking.

Make the right purchase decision.  
Contact our presales specialists.

Explore **HPE GreenLake**



Contact us